

NEWSLETTER

January 2012



Content

Tangle	p. 2
Lilo Wesely	p. 3
Mijn – Eigen	p. 6
Handbag template	p.5

All the best in the new year 2012...

Dear friends of Prague Patchwork Meeting,

While introducing the first PPM Newsletter of this year, I would like to wish you lots of health, happiness and success in the upcoming 2012. I believe that it will be an inspirational year, full of quilting and other experiences.

The 6th Prague Patchwork Meeting will be here in just a couple of months. This time we would like to introduce you one of the lecturers – Lilo Wesely, the collection Tangle, representing the best of the annual competition in Saint Marie aux Mines held in 2011.

Further more, we would like to present the Mijn-Eigen shop. We are delighted to have them in Prague this year!

Anna Štěřbová

The best for patchwork...

All you need for quilting just a click away!

www.sicistroj.cz

www.latky.cz

www.ragos.cz

www.strima.com

www.vierma.cz

www.patchwork-hobby.cz

www.patch-design.cz

www.aja-patchwork.cz

www.hotelstep.cz

„This year's collection is enriched by 3 quilts, which were made by the judges themselves..“

Gul Laporte



Turid Tonnesen, Invades Space – awarded quilt within the Tangle collection

The „Tangle“ Collection

For a number of years, we are trying to bring the PPM visitors the best of European patchwork, making them see the foreign exhibitions in Prague. The Tangle collection, which will be lended to Prague by the European Patchwork Meeting (EPM) in France is definitely a collection worth admiring and displaying.

The EPM organizes an international patchwork contest with a theme every year. The competitions are getting very popular and they receive applications from all around the world.

For "Tangle", that wasn't such an easy matter to deal with, we received 168 entries from which the jury (Elisabeth Nacenta de la Croix from Switzerland who acted as President of the jury, Katie Pasquini Masopust, USA and Cosabeth Parriaud, France) had to chose 32 pieces, all measuring the compulsory 100 x 100cm.

The prizes are very attractive, particularly the best of which is a cheque of 3 000€ to the winner, the quilt then remaining the property of the EPM. Further prizes are also very interesting, consisting of sophisticated sewing machines, a lot of threads, cash money etc, thanks to our numerous sponsors. The quality of the works and the imagination of the participants is improving year after year making the choice always more difficult. EPM would also like to thank the jury memebers who accepted to make a quilt on the same theme - these quilts will also be exhibited in Prague together with the rest of the finalist's works, but of course, they were not part of the contest.



Solange Lasbleis, *La Reserve* – Winner



Olivia Uffer, *Enlacement Urbain*, Prize of the QUILTMANIA magazine



Martine Mollet Bastien, *Labyrinthe*, French Patchwork prize

EPM is very happy to show this contest to Czech quilters. The contest is travelling for a whole year and is going to Holland, Paris, Italy, Czech Republic and South Africa and EPM is still getting other countries very much interested in getting it.

We would very much like to invite you to participate on the next years competition. The theme is again very inspirational and variable – „Yesterday, today and tomorrow“. More information may be found on

www.patchwork-europe.com.

Gul Laporte, Art Director of EPM

Lecturers on the 6th PPM – Lilo Wesely

Lilo started with patchwork in 1978 in parallel to her full time job (accountant, music teacher). As there was no literature or workshops available in Austria at that time, she had to learn everything on her own, getting inspiration from the books she brought from London and later on from workshops held by international artists (i.e. Ami Simms, Pauline Burbridge, Dorle Stern-Strater).

Lilo is a teacher herself since 1987, giving workshops on patchwork, quilting and pattern designs. In Prague, she will introduce a variation on the "rotated Log-Cabin" she prepared for the Quilt-Expo Germany in 1988 and which is still among her favourites. Lilo is using both traditional as well as modern techniques.

She is a regular member of Austrian as well as international exhibitions and competitions, from which she received a large number of awards (6 first, 2 second and one third place). Lilo is member of the Patchwork Gruppe Wien, within her club; she participated on publishing the book "Fleckerl-Zauber" in 2003. The club members used the log cabin pattern within some of the quilts made from traditional Austrian fabrics, used for the national costumes.

Log Cabin fascinates Lilo since the very beginning. Soon she discovered the endless possibilities and variations this pattern offers. She used this pattern for the very first bed cover she made. What seemed like necessity at first – creating own patterns and drawing them out, became joy, which is nowadays accompanied by using modern computer programmes.

Lilo Wesely



Lilo Wesely, Im Jahreskreis

Lilo Wesely, Kleeblatt



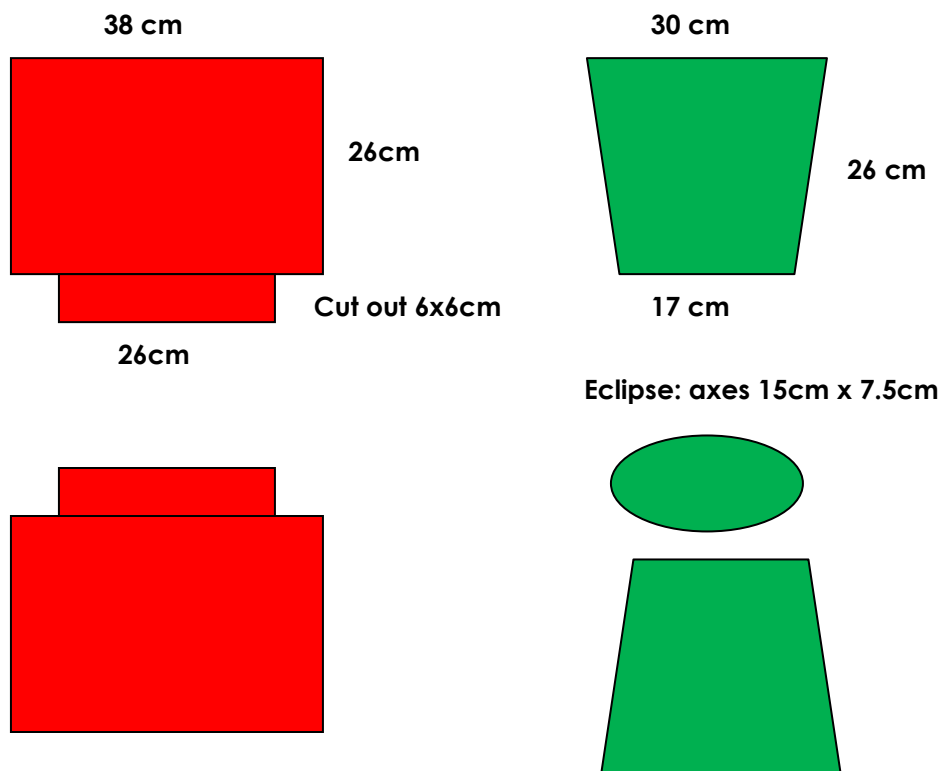
Basic template for a handbag or bag

Red template:

- 2 x same piece from the main fabric and 2x from the lining

Green template:

- 2 x same piece from the main fabric (with the stiffener) + 2 x from the lining, 1 x eclipse bottom piece from the main fabric (with the stiffener) + 1 x from the lining



Sewing:

For the red type of bags, we first sew together the side seams of the main pieces – 26cm long and we connect the bottom by a seam (low edges of the piece with indicated cut-outs). We iron the seams out and place them on each other, perpendicularly to the direction of the first seams. We sew together the loose edges (12cm seams).

For the green type, we first sew together the side seams, iron them out and sew on the bottom piece, cutting the eclipse if required.

We repeat the same steps for the lining, add pockets (if required) and place the „top“ and lining bag on each other with the right side, sewing through the top edge, leaving a small gap for the turnaround which we complete in hand.

Adjustments: The width of the bottom is given by the size of the cut out square (3x3 square means 6cm wide base), we adjust the height and width above the cut out to the required size. If we want the bag to open up more, we can widen the main piece template towards the top, increasing the top edge size by ca 10%.

Handles: We use handles made of the same or different fabric and place them to the top edge of the bag before sewing through the lining. Also, we can place the lining first and place the handles on the outside of the bag – on the completed item. Alternatively, we can use purchased handbag handles.

Jana Štěrbová

We are introducing a new retailer: Mijn-Eigen, Netherlands

We are delighted to announce that the PPM visitors will have the chance to make direct purchases from the international retailer Mijn-Eigen from Netherlands during this year's event. The company has many customers among Czech quilters who appreciate the wide assortment of modern materials, which is otherwise unavailable in the country. Let Mijn Eigen introduce themselves...

„We are a Dutch company involved with textile surface design. Our customers are quilters, patchworkers, sewers, beadpeople, dyers and mixed media artists.

During our first time in Prague, we want to share our experience with you and will do lots of small demonstrations and show you our samples.

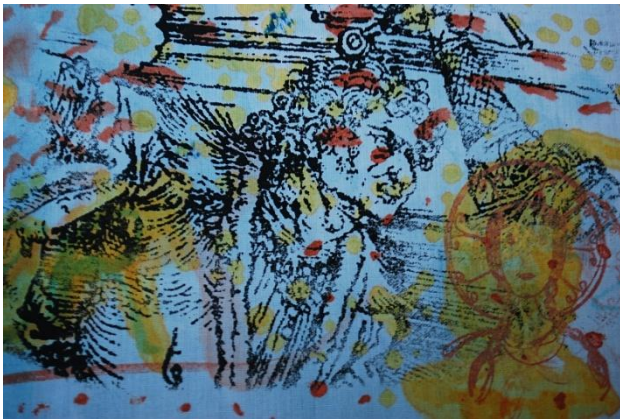
We offer different kinds of textile paints: acrylic paints, textile inks, paintsticks, transferpaints and procion. We are the main supplier of synthetic fabrics like Lutradur, Evolon, Tyvek and etc. Other products we offer are silk yarns, „shrink a bit“, scrim, „get rusty“ and of course one of our very special Treebark.

Besides, we also offer number of tools, such as heatguns, soldering irons and ergocutter rolling knives.

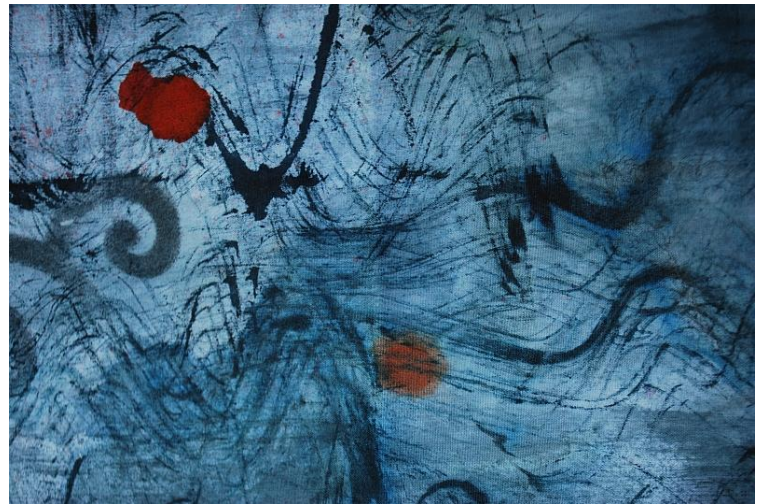
Anything you need to start your personal creative process – we have it!

We will be looking forward to welcoming you at our stand in Prague!“

www.mijn-eigen.nl



Photography: Mijn-Eigen



6TH INTERNATIONAL PRAGUE PATCHWORK MEETING